

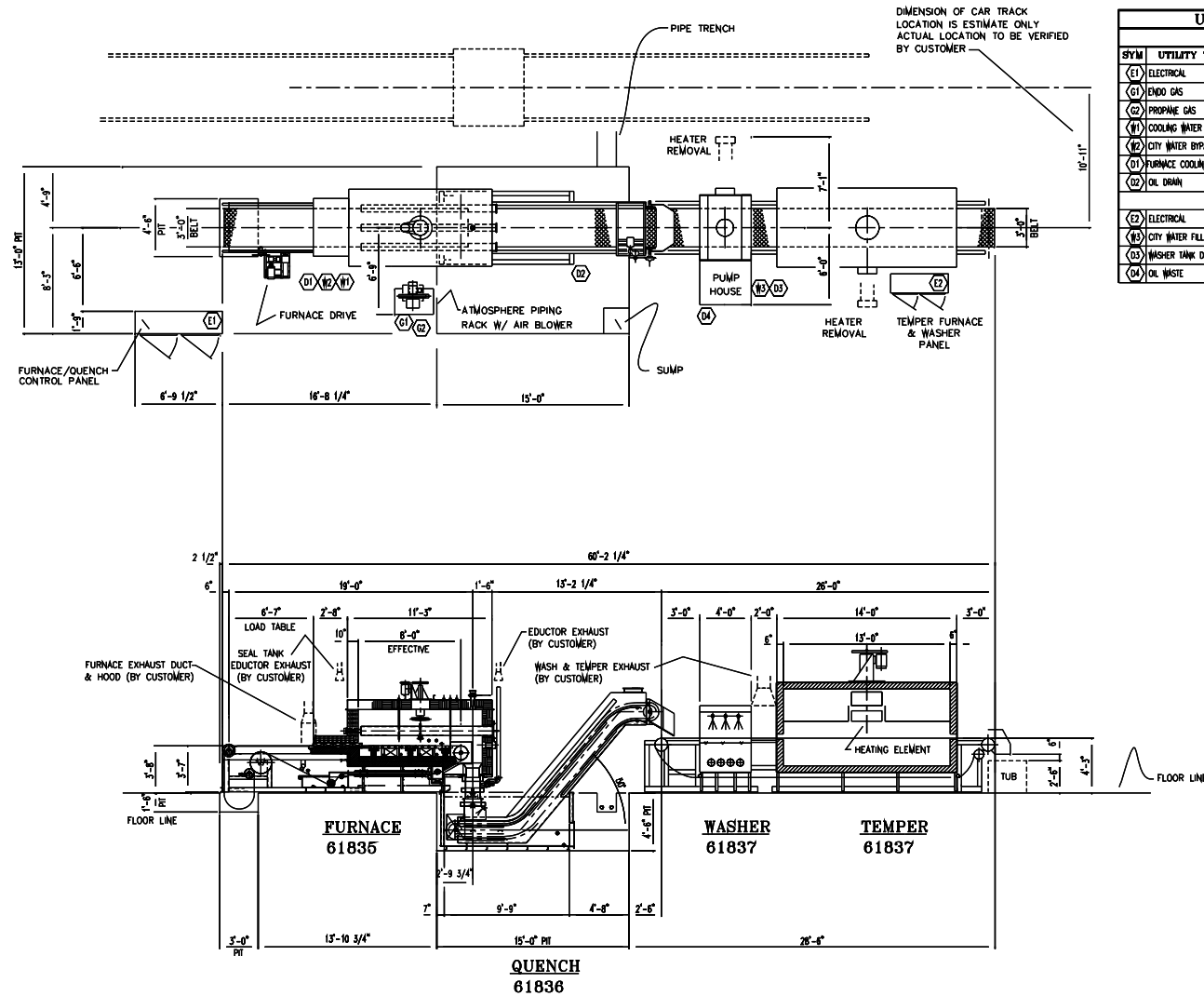
INSTALLATION OBLIGATIONS

(FROM AFC-PFD0-14 AS SOLD CONTRACT
6185-37, PROPOSAL # P-71430 pg 20)

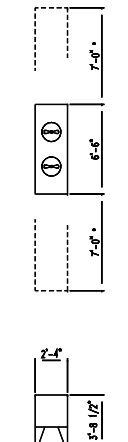
PURCHASER

- 1) ALL FREIGHT CHARGES
- 2) RECEIVE AND UNLOAD THE EQUIPMENT UPON ARRIVAL
- 3) MOVE EQUIPMENT TO JOB SITE
- 4) REASSEMBLE AND LEVEL ALL COMPONENTS DISASSEMBLED FOR SHIPMENT
- 5) PROVIDE ALL NECESSARY PITS, FOUNDATIONS, DRAINS, GROUTING, COVER PLATES, CAR RAILS AND GUARD RAILS
- 6) PROVIDE ONE-POINT CONNECTION OF ALL UTILITIES, SUCH AS PROPANE GAS, ELECTRICITY, WATER, COMPRESSED AIR AND ATMOSPHERES AS SPECIFIED BY AFC'S "T1" DRAWING (AT SPECIFIED PRESSURE AND QUANTITIES), WITH DISCONNECTS, CURRENT LIMITING DEVICES AND SUITABLE GROUND
- 7) PROVIDE CONDUIT AND WIRING BETWEEN PANELS AND JUNCTION BOXES, ATMOSPHERE AND COMBUSTION PIPING BETWEEN VARIOUS PIECES OF EQUIPMENT AS REQUIRED
- 8) PROVIDE CONDUIT AND THERMOCOUPLE WIRE FROM EACH LOCATION TO CONTROL PANEL
- 9) PROVIDE ALL FIRE PROTECTION EQUIPMENT, AS REQUIRED
- 10) CHARGE EQUIPMENT WITH ALL REQUIRED QUENCH MEDIA, LUBRICANTS AND HYDRAULIC FLUIDS
- 11) PROVIDE ALL MATERIAL AND LABOR TO INSTALL ALL REQUIRED HOODS, STACKS, VENTS, GRATING, CANALKS, ROOF PENETRATIONS, ETC
- 12) INSTALLATION OF AIR-OIL HEAT EXCHANGER AND ALL UTILITY CONNECTIONS AS REQUIRED.
- 13) PROVIDE A COMPETENT OPERATOR DURING STARTUP AND CYCLING OF EQUIPMENT TO BECOME FAMILIARIZED WITH CONTROLS.

UTILITY CONNECTIONS			
FURNACE & QUINCH			
SYM	UTILITY TYPE	EQUIPMENT	CAPACITY & SIZE
(E1)	ELECTRICAL	FURNACE & QUENCH	480V/3 PH/60 HZ @ 350 AMP
(G1)	ENDD GAS	FURNACE	1200 CFH, 1 1/4" PIPE SIZE, 10 GSI
(G2)	PROPANE GAS	FURNACE	100 CFH, 1/2" PIPE SIZE, 1 PSI
(W1)	COOLING WATER	FURNACE COOLING	12 GPM @ 85° F, 3/4" PIPE SIZE
(W2)	CITY WATER BYPASS	FURNACE COOLING	12 GPM, 3/4" PIPE SIZE
(R1)	FURNACE COOLING RETURN	FURNACE COOLING	12 GPM @ 140° F, 2" PIPE SIZE
(O1)	OIL DRAIN	QUENCH OIL	2" PIPE SIZE
TEMPER			
(E2)	ELECTRICAL	TEMPER FURNACE	480V/3 PH/60 HZ @ 300 AMP
(C1)	CITY WATER FILL	WASHER	30 GPM, 1" PIPE SIZE
(D1)	WASHER TANK DRAIN	WASHER TANK DRAIN	1 1/4" PIPE SIZE
(O2)	OIL WASTE	OIL SHOWER	1 1/4" PIPE SIZE



SECTION THRU FURNACE LINE



* CLEARANCE REQUIRED FOR ROD CLEANING OF TUBE BUNDLES

AIR OIL HEAT EXCHANGER
DO NOT LOCATE AT A DISTANCE
GREATER THAN 100 FT FROM
QUENCH TANK (200 FT TOTAL PIPE)